

Certificate of Analysis

Anti-Histamine H₁ Receptor (HRH1) Antibody

H1R, HH1R

Cat #: AHR-001 | **Host:** Rabbit | **Type:** Polyclonal | **Form:** Lyophilized

Applications: ICC, IF, IFC, IHC, WB

Reactivity: M, R

May also work in: IP

May also work in: H

Application key: CBE- Cell-based ELISA, FC- Flow cytometry, ICC- Immunocytochemistry, IE- Indirect ELISA, IF- Immunofluorescence, IFC- Indirect flow cytometry, IHC- Immunohistochemistry, IP- Immunoprecipitation, LCI- Live cell imaging, N- Neutralization, WB- Western blot

Species reactivity key: H- Human, M- Mouse, R- Rat

For research purposes only, not for human use

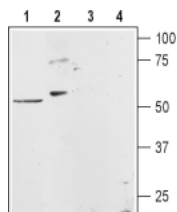
Properties

Immunogen	Peptide (C)HSRQYVSGHLHLNRE, corresponding to amino acids 396-409 of rat HRH1 (Accession P31390). 3 rd intracellular loop.
Homology	Mouse - identical; human, dog - 13/14 amino acid residues identical.
RRID	AB_2039915.
Purity	Affinity purified on immobilized antigen.
Form	Lyophilized powder. Reconstituted antibody contains phosphate buffered saline (PBS), pH 7.4, 1% BSA, 0.05% NaN ₃ .
Isotype	Rabbit IgG.
Standard quality control of each lot	Western blot analysis.
Peptide confirmation	Confirmed by amino acid analysis and mass spectrometry.
Storage before reconstitution	The antibody ships as a lyophilized powder at room temperature. Upon arrival, it should be stored at -20°C.
Reconstitution	25 µl, 50 µl or 0.2 ml double distilled water (DDW), depending on the sample size.
Antibody concentration after reconstitution	0.8 mg/ml.
Storage after reconstitution	The reconstituted solution can be stored at 4°C for up to 1 week. For longer periods, small aliquots should be stored at -20°C. Avoid multiple freezing and thawing. Centrifuge all antibody preparations before use (10000 x g 5 min).

Applications

Western blot

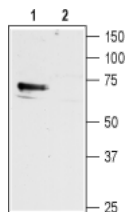
Rat heart membranes (1:200), rat basophilic leukemia cell lysates (1:200) and mouse brain membranes (1:400).



Western blot analysis of rat heart membranes (lanes 1 and 3) and rat basophilic leukemia (RBL) cell lysates (lanes 2 and 4):

1,2. **Anti-Histamine H₁ Receptor (HRH1) Antibody** (#AHR-001), (1:200).

3,4. Anti-Histamine H₁ Receptor (HRH1) Antibody, preincubated with [Histamine H1 Receptor/HRH1 Blocking Peptide](#) (#BLP-HR001).



Western blot analysis of mouse brain membranes:

1. **Anti-Histamine H₁ Receptor (HRH1) Antibody** (#AHR-001), (1:400).

2. Anti-Histamine H₁ Receptor (HRH1) Antibody, preincubated with [Histamine H1 Receptor/HRH1 Blocking Peptide](#) (#BLP-HR001).

Immunohistochemistry

Rat lung sections (paraffin-embedded), (1:100) and rat brain sections (frozen), (1:100).

Immunocytochemistry

Mouse isolated microglia ([Apolloni, S. et al. \(2017\) Front. Immunol. 8, 1689.](#)).

Indirect flow cytometry

Mouse P815 mast cells ([Dong, H. et al. \(2019\) Front. Cell. Neurosci. 13, 191.](#)).