

Certificate of Analysis

Anti-Human Orai1 (extracellular) Antibody

TMEM142A, CRACM1, Calcium release-activated calcium channel protein 1

Cat #: ACC-060 | **Host:** Rabbit | **Type:** Polyclonal | **Form:** Lyophilized

Applications: ICC, IF, IFC, IHC, LCI, WB

Reactivity: H

May also work in: IP

Application key: CBE- Cell-based ELISA, FC- Flow cytometry, ICC- Immunocytochemistry, IE- Indirect ELISA, IF- Immunofluorescence, IFC- Indirect flow cytometry, IHC- Immunohistochemistry, IP- Immunoprecipitation, LCI- Live cell imaging, N- Neutralization, WB- Western blot

Species reactivity key: H- Human, M- Mouse, R- Rat

For research purposes only, not for human use

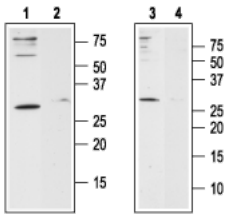
Properties

Immunogen	Peptide (C)KKQPGQPRPTSK, corresponding to amino acid residues 203-214 of human Orai1 (Accession Q96D31). 2 nd extracellular loop.
Homology	Canis - identical; bovine - 12/13 amino acid residues identical.
RRID	AB_2039844.
Purity	Affinity purified on immobilized antigen.
Form	Lyophilized powder. Reconstituted antibody contains phosphate buffered saline (PBS), pH 7.4, 1% BSA, 0.05% NaN ₃ .
Isotype	Rabbit IgG.
Specificity	Will not recognize mouse or rat Orai1.
Standard quality control of each lot	Western blot analysis.
Peptide confirmation	Confirmed by amino acid analysis and mass spectrometry.
Storage before reconstitution	The antibody ships as a lyophilized powder at room temperature. Upon arrival, it should be stored at -20°C.
Reconstitution	25 µl, 50 µl or 0.2 ml double distilled water (DDW), depending on the sample size.
Antibody concentration after reconstitution	0.65 mg/ml.
Storage after reconstitution	The reconstituted solution can be stored at 4°C for up to 1 week. For longer periods, small aliquots should be stored at -20°C. Avoid multiple freezing and thawing. Centrifuge all antibody preparations before use (10000 x g 5 min).

Applications

Western blot

Jurkat (T lymphocyte, acute T cell leukemia) and HL-60 (human promyelocytic leukemia) cell line lysates (1:200-1:500).



Western blot analysis of human Jurkat T-cell leukemia cell line lysate (lanes 1 and 2) and human HL-60 acute promyelocytic leukemia cell line lysate (lanes 3 and 4):

1,3. **Anti-Human Orai1 (extracellular) Antibody** (#ACC-060), (1:200).

2,4. Anti-Human Orai1 (extracellular) Antibody, preincubated with [Human Orai1 \(extracellular\) Blocking Peptide](#) (#BLP-CC060).

Indirect flow cytometry

HL-60 and Jurkat live cells.

The control antigen is not suitable for this application.

Last update: 02/01/2022