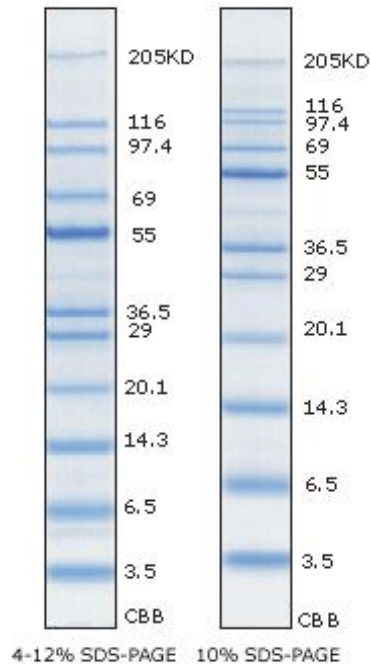


# EzWay™ Protein-Blue MW Marker

- 1. **Catalog No.** K08000S
- 2. **Quantity** 500 ul
- 3. **Storage & Stability** Store at -20°C
- 4. **Description** EzWay™ Protein-Blue MW Marker is mixture of purified proteins that resolves to 11 bands during electrophoresis.
  - Unstained protein standard for estimation of molecular weight of your sample protein
  - Contains 11 polypeptides
  - Molecular weight range : 3.5-205 kDa
  - Ready-to-use & Easy-to-use : prediluted in loading buffer
  - Extra intense on 55 kDa band for easy identification
  - Two vials of 500 ul each are provided
- 5. **MW Range** 3.5 - 205 kDa
- 6. **No. of Application** 100 mini-gels (5 ul each)

7. **Contents**



Protein	MW(kDa)	ug/ml
Myosin	205	56
Beta-Galactosidase	116	39
Phosphorylase B	97.4	47
Bovine Serum Albumin	69	51
<b>Glutamic dehydrogenase</b>	<b>55*</b>	<b>206</b>
Lactic dehydrogenase	36.5	62
Carbon anhydrase	29	77
Trypsin inhibitor	20.1	84
Lysozyme, chicken egg white	14.3	80
Aprotinin, Bovine Lung	6.25	92
Insulin Beta chain	3.5	206

- 8. **How to Use** Before using, dissolve sediment warming by hand for about 1 minute and mixing lightly, and then load directly 5 ul on to a mini-gel. Please store the vial in a freezer promptly after use.
- 9. **Note** This marker is suitable for determination of exact MW.