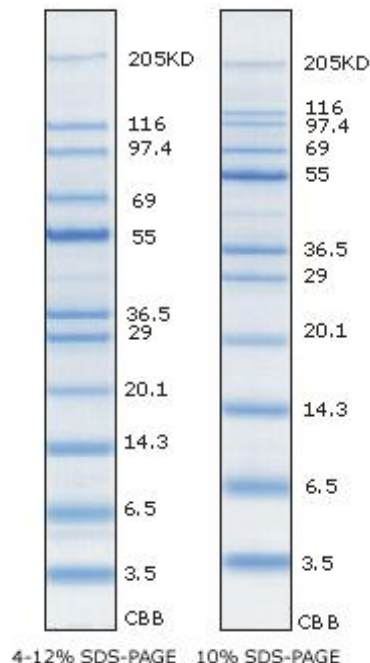


EzWay™ Protein-Blue MW Marker

- 1. Catalog No.** K08000
- 2. Quantity** 500 ul x 2
- 3. Storage & Stability** Store at -20°C
- 4. Description** EzWay™ Protein-Blue MW Marker is mixture of purified proteins that resolves to 11 bands during electrophoresis.
- Unstained protein standard for estimation of molecular weight of your sample protein
 - Contains 11 polypeptides
 - Molecular weight range : 3.5-205 kDa
 - Ready-to-use & Easy-to-use : prediluted in loading buffer
 - Extra intense on 55 kDa band for easy identification
 - Two vials of 500 ul each are provided
- 5. MW Range** 3.5 - 205 kDa
- 6. No. of Application** 200 mini-gels (5 ul each)
- 7. Contents**



Protein	MW(kDa)	ug/ml
Myosin	205	56
Beta-Galactosidase	116	39
Phosphorylase B	97.4	47
Bovine Serum Albumin	69	51
Glutamic dehydrogenase	55*	206
Lactic dehydrogenase	36.5	62
Carbon anhydrase	29	77
Trypsin inhibitor	20.1	84
Lysozyme, chicken egg white	14.3	80
Aprotinin, Bovine Lung	6.25	92
Insulin Beta chain	3.5	206

- 8. How to Use** Before using, dissolve sediment warming by hand for about 1 minute and mixing lightly, and then load directly 5 ul on to a mini-gel. Please store the vial in a freezer promptly after use.
- 9. Note** This marker is suitable for determination of exact MW.